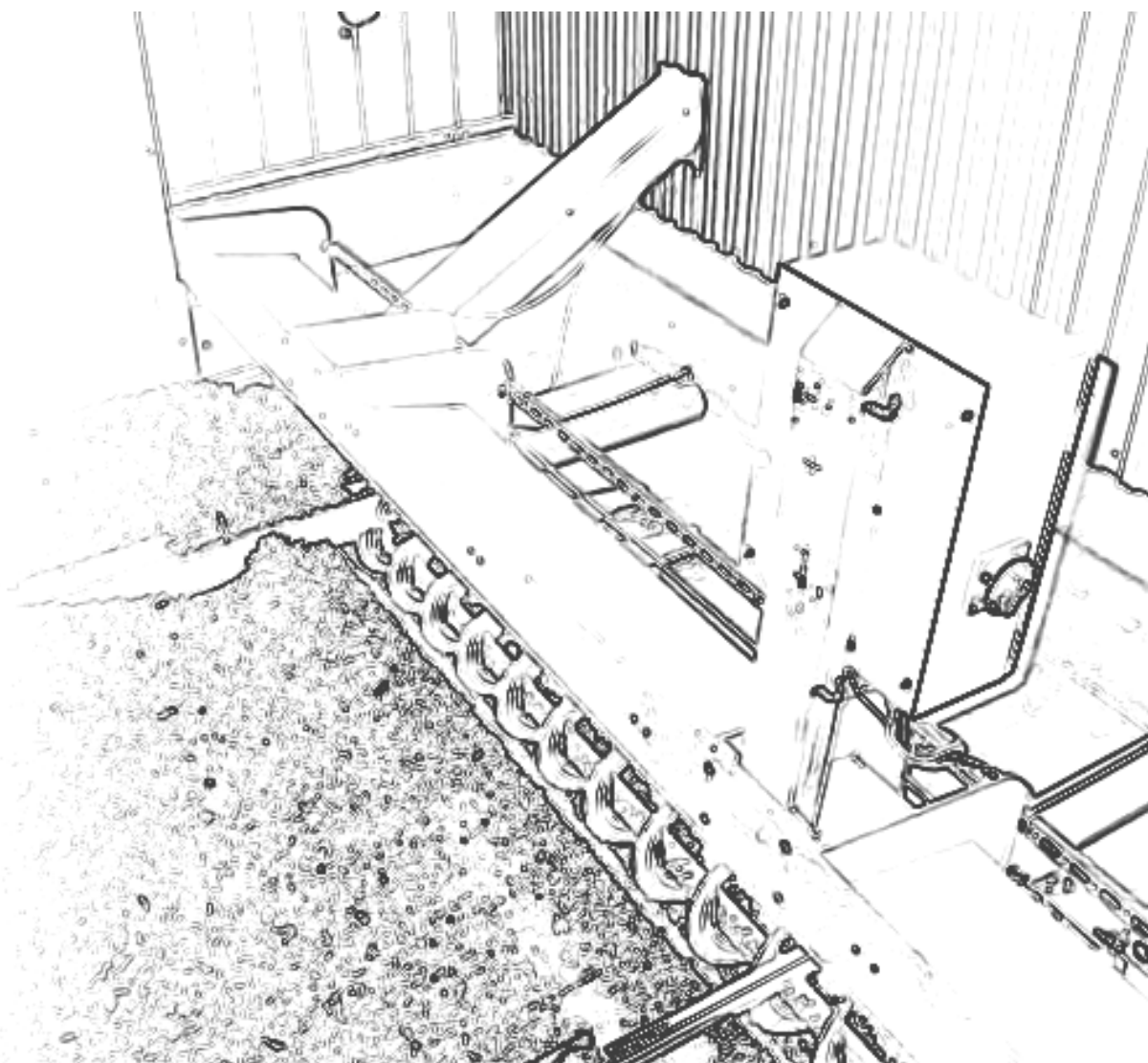


# MANUAL FOR INSTALLATION *Scraper system*

Version 1.1



**TWINHEAT**<sup>®</sup>

Nørrevangen 7 • DK-9631 Gedsted • Phone +45 98645222 • Fax. +45 98645244  
Mail: [twinheat@twinheat.dk](mailto:twinheat@twinheat.dk) • Web: [www.twinheat.dk](http://www.twinheat.dk)

1) Make sure that the concreting in the pit is even and smooth. If there are ridges they must be removed.

2) The scrape system is lifted down in the pit  
The flange of the scrape system must be placed on the edge of the pit. It may be necessary to adjust the front adjusting screws on the feet on each side. The flange of the channel must lie down on the concrete in both sides.

3) Holes for M10 anchor bolts are drilled down through the base plate. There are 10 pcs. in the base plate and 7 pcs. in the bent-up part of the base plate. Anchor bolts are mounted in the holes and tightened. (see drawing)

4) Adjust the scraping system on the middle and rear adjusting screws so that the hydraulic cylinders are horizontally. Check with spirit level. When the height is adjusted the 16 pcs. M16 bolts are tightened.

5) The 2 wall supports are pulled out and bolted to the rear wall by means of 4 pcs. M12 anchor bolts at each side. Afterwards the joint between the 2 square tubes are welded, so the connection is fixed.

6) The flange of the channel with the 6 holes is fixed to the floor by means of rawplugs and screws. Rails 8 pcs. are also fixed to the floor by means of rawplugs and screws. They are to be placed according to the drawing. When the rails are fixed they must be welded to the flange of the scraping system. The weldings are grinded down so they are flat. (see drawing)

7) The 2 scrapers are placed on the rails and fixed to the hydraulic cylinders with the shafts. The scrapers must be placed precisely perpendicular to the scraper system to ensure an even pull.

The scraper clamps, 3 pcs. on each scraper are fixed to the floor by means of M12 anchor bolts, 4 pcs. on each clamp. The clamps are to be placed when the hydraulic cylinders are in neutral position. They are to be placed 35mm from the edge of the carrier plate on the scraper. (see drawing)

8) The transport auger is fixed to the outlet with the pipe clamp.  
The auger must be supported in order to relieve the connection.



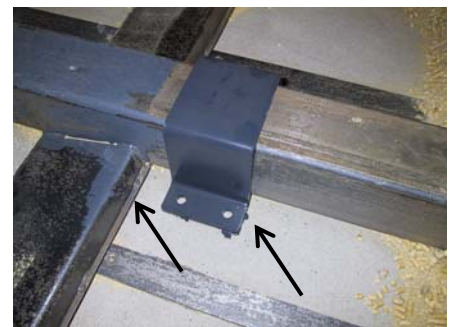
The flange is placed on the edge of the pit



Adjusting screws and M16 bolts.



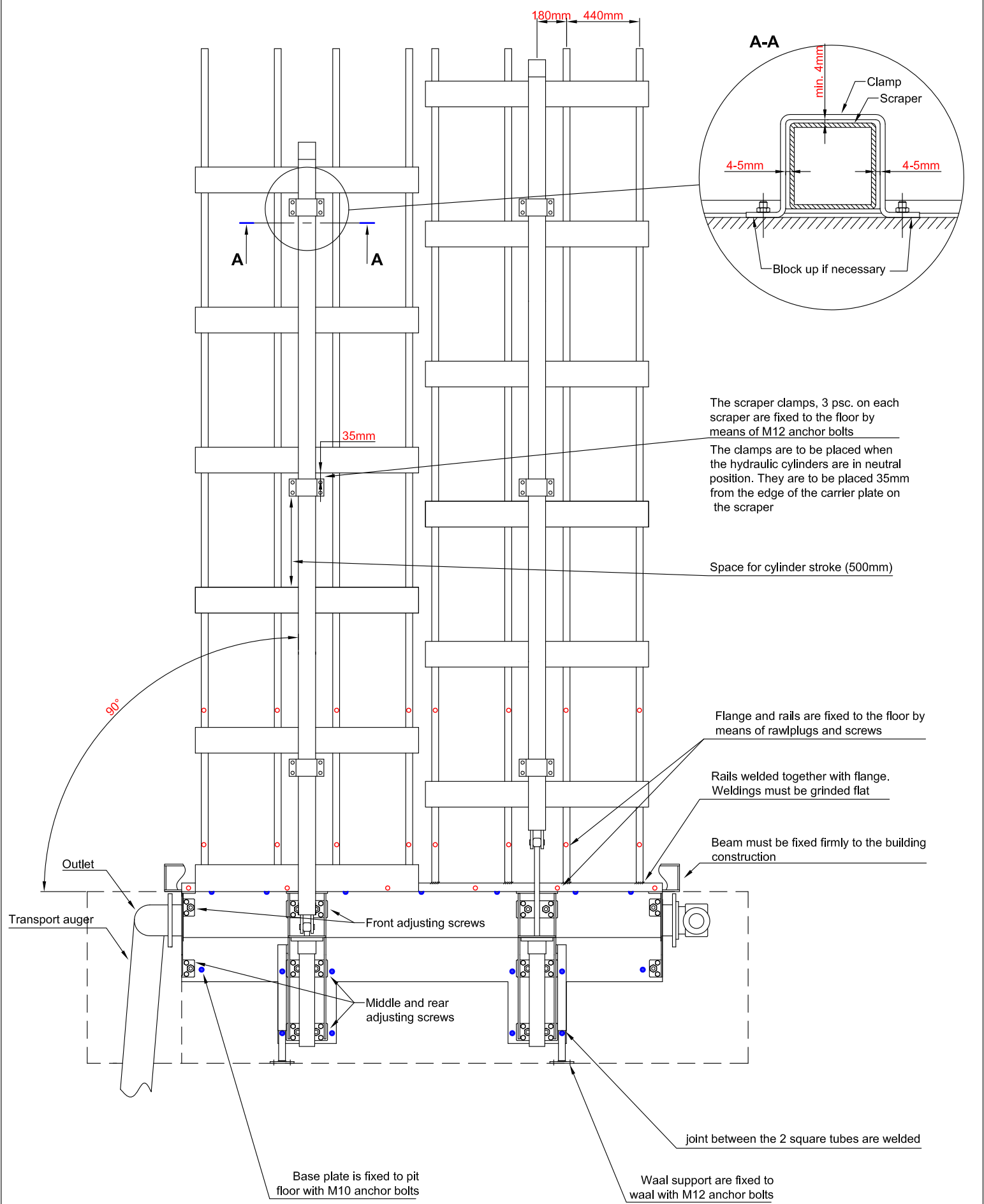
Rails welded together with flange of scrape system.



Scraper clamp and carrier plate.



Auger fixed to outlet of scraper system by means of the pipe-clamp



The scraper clamps, 3 psc. on each scraper are fixed to the floor by means of M12 anchor bolts

The clamps are to be placed when the hydraulic cylinders are in neutral position. They are to be placed 35mm from the edge of the carrier plate on the scraper

Space for cylinder stroke (500mm)

Flange and rails are fixed to the floor by means of rawplugs and screws

Rails welded together with flange. Weldings must be grinded flat

Beam must be fixed firmly to the building construction

joint between the 2 square tubes are welded

Base plate is fixed to pit floor with M10 anchor bolts

Waal support are fixed to waal with M12 anchor bolts

Dato	Forhold	Init.	Rev.
Jan. 2012	1:20	TH	B
Materiale	Prod. nr.		
Tegn. nr.	Underlev. nr.		

**TWIN HEAT®**

Installation drawing  
Scraper system