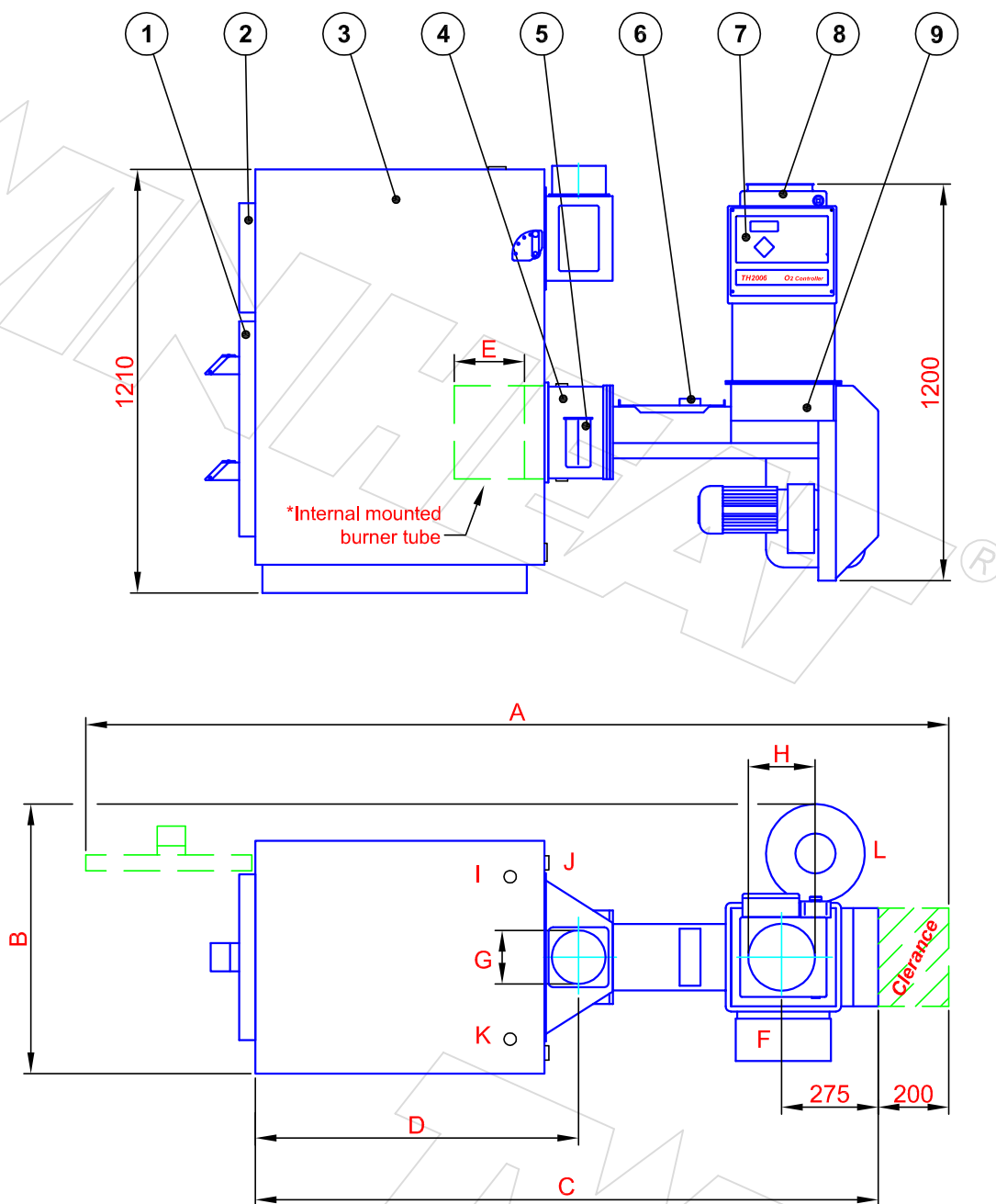


COMBI SYSTEM TYPE ME

with stoker-inlet on the rear of the boiler



*The system is shown with "internal mounted burner tube" and therefore not suitable for heating with logs. If the system must be suitable for heating with logs, the measure "E" must be added to the measures A and C.

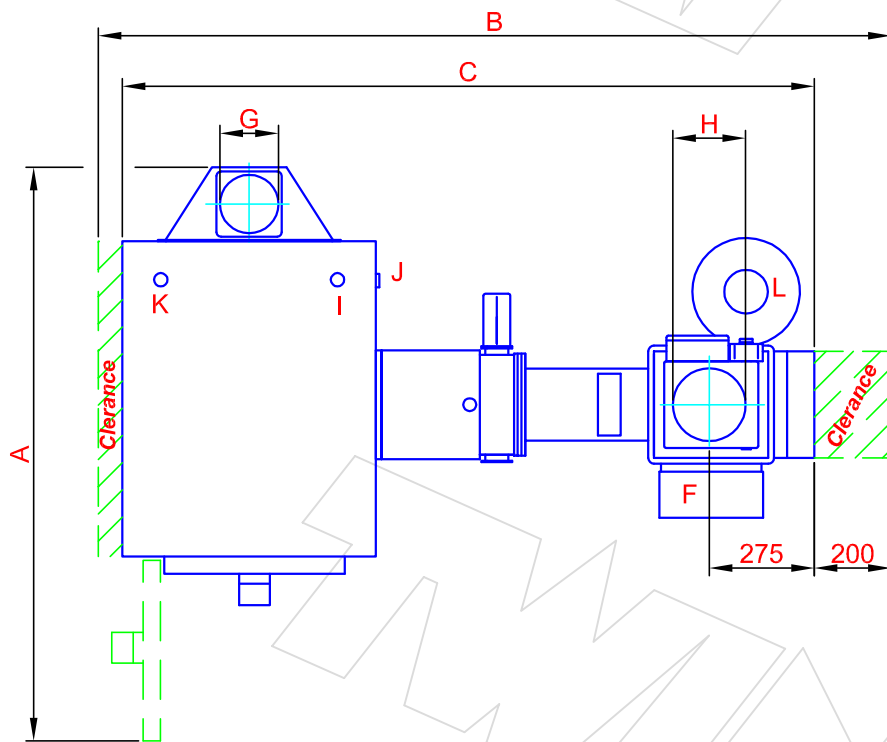
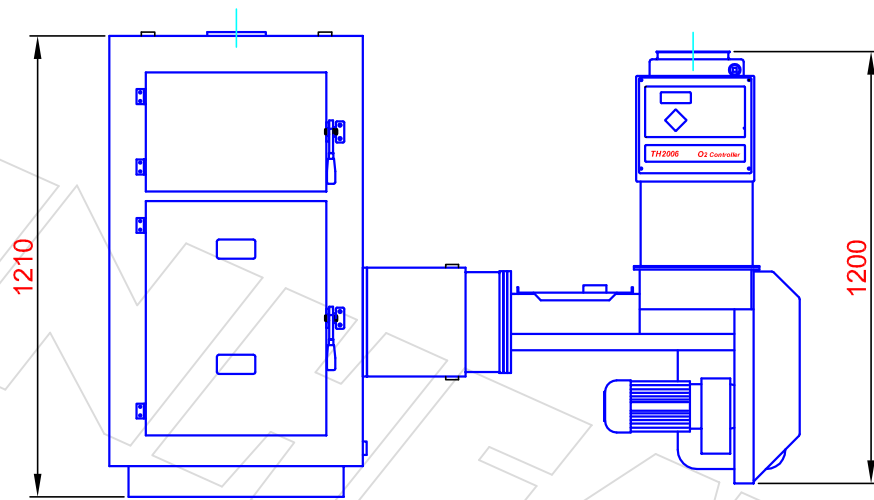
An internal mounted burner tube provides the advantage of a reduced length of the system. It is only an option by stoker-inlet on the rear of the boiler.

- | | |
|------------------|--------------------|
| 1. Boiler door | 6. Sprinklersystem |
| 2. Cleaning door | 7. Controller |
| 3. Boiler | 8. Fuel valve |
| 4. Burner tube | 9. Stoker |
| 5. Fan | |

Type	Dimensions					Connections						
	A	B	C	D	E	F Electrical con.	G Flue spigot	H Auger con.	I Flow	J Return	K Expansion	L Sprinkler
ME20i	2690	770	1940	920	-		Ø153		G1"	G1"	G1"	
ME40i	2960	770	2190	1330	440	Optional single phase 230V or 3 phase 400V	Ø185	Ø160	G1½"	G1½"	G1½"	G ½"
ME80i	3630	960	2560	1350	340		Ø213		G2"	G2"	G2"	

Dimensions in mm.

With stoker-inlet on the side of the boiler



Type	Dimensions			Connections						
	A	B	C	F Electrical con.	G Flue spigot	H Auger con.	I Flow	J Return	K Expansion	L Sprinkler
ME20i	1510	2040	1770		Ø153		G1"	G1"	G1"	
ME40i	1980	2305	2035	Optional single phase 230V or 3 phase 400V	Ø185	Ø160	G1½"	G1½"	G1½"	G ½"
ME80i	2280	2950	2630		Ø213		G2"	G2"	G2"	

Dimensions in mm.